



Island Pacific FastPlan

Island Pacific FastPlan Typical Implementation

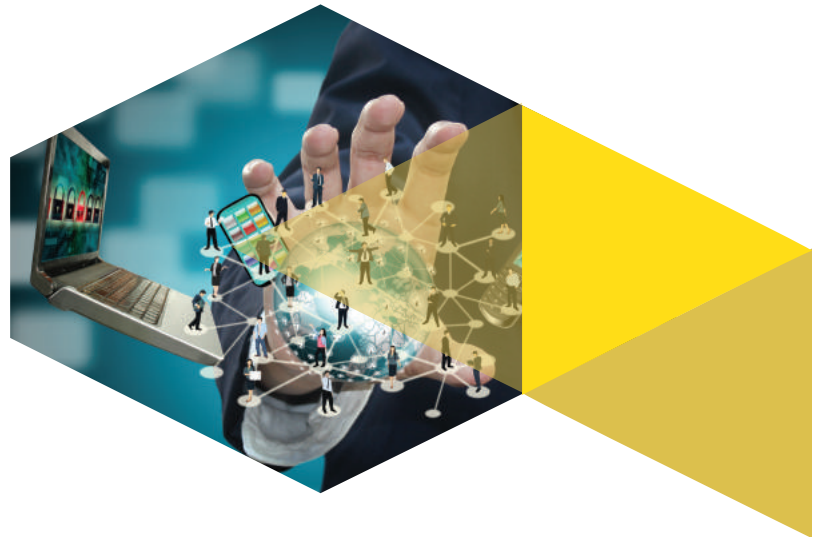
Island Pacific FastPlan templates provide retailers with best practice retail planning delivered quickly. A typical FastPlan implementation cycle for pre-season and in-season planning will take three months*

*Subject to resource availability from both the retailer and Island Pacific

Island Pacific Resources

We will provide you with your own Island Pacific FastPlan team who will assist you every step of the way and ensure that the solution is installed efficiently and you can quickly start using it from day one of go live.

- ▾ Delivers a rapid ROI
- ▾ Improved stock turn
- ▾ Lower inventory levels
- ▾ Best practice workflow
- ▾ Increased productivity
- ▾ OTB Control



Key Milestones

Wk 1-2
Kick off
technical &
functional
review

Wk 3-5
Adjust
configuration

Wk 6-8
Import
data &
validate

Wk 9
Pre-UAT
Training

Wk 10
Data
validation
& UAT

Wk 11
Report
adjusting

Wk 12
Pre-Go Live
checks

Wk 13
Go Live

Wk 14
Go Live
support





Island Pacific
FastPlan



To find out more or request a demo please contact us on:

Island Pacific USA +1 800 994 3847
Island Pacific UK +44 1 279 874545
Island Pacific AU +61 2 9369 8500
Island Pacific NZ +64 9 980 4595

E-mail: info@islandpacific.com
Website: www.islandpacific.com

 facebook.com/IPGlobalRetail
 twitter.com/IPGlobalRetail
 youtube.com/user/IPGlobalRetail
 linkedin.com/company/island-pacific

